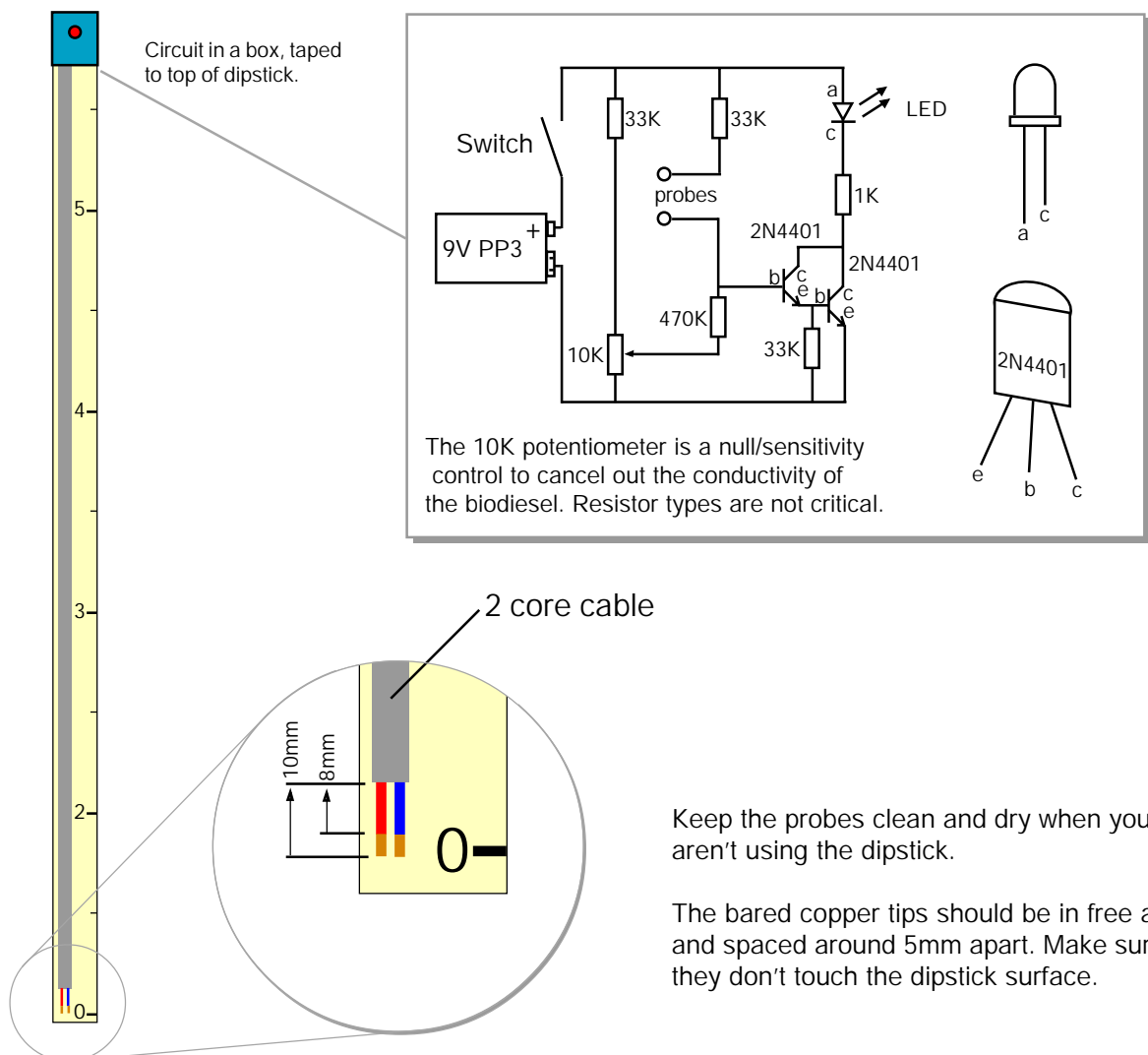


# An electronic dipstick to help you find the level of Glycerol or washwater in your biodiesel tank.

You may not be able to see the level of your glycerol or washwater in your tank. Sometimes, you need to know. Here's a simple probe you can use to dip into the tank and measure off how far down the interface is.

If you have a resistance meter, you can simply connect it to a pair of wires, with their ends stripped back, and see how far down the ends have to go into the liquid until the resistance suddenly drops.

Or, you can make your own dedicated dip-stick, like this...



You can make the dip-stick from wood or metal. Write depth markers down the side, so you can tell how far down the water/glycerol is. Or, reverse the scale, to see how deep the water or glycerol is. Or, mount it so that the sensor tips are a fixed height above the base of your tank, to warn when water or glycerol has risen above that point.

Keep the probes clean and dry when you aren't using the dipstick.

The bared copper tips should be in free air and spaced around 5mm apart. Make sure they don't touch the dipstick surface.

Operation: Adjust the sensitivity control while the probe is in the biodiesel, but not in water or glycerol. Adjust it so that the LED just goes out.

As you lower the probe into the glycerol or water, the LED will light.